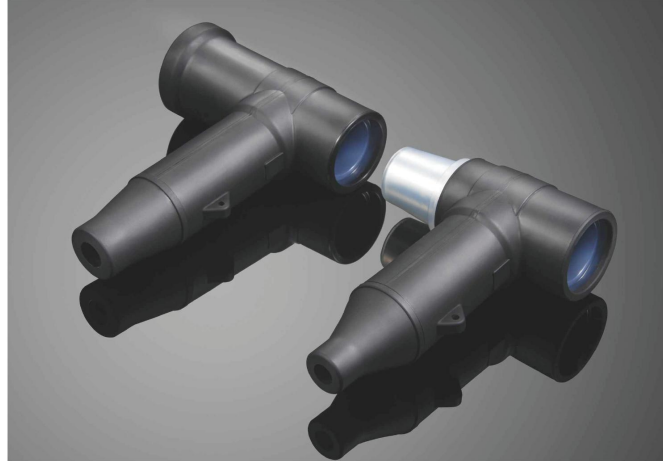


GSFC/GSRC
Screen Separable
Cable Connector



Features

- *The integrated LSR geometric stress cone provides high performances for Screened Connector, such as rugged structure, well-elasticity and reliable long-term operation.*
- *Without using any auxiliary tools, the Screened Connector can be installed vertically or horizontally, even under any angle.*
- *The Screened Connector has a compact design which is suitable for installations in narrow spaces.*
- *RoHS compliant*

Key technical performances

Standard	IEC 60502			
	6/10(12)kV	8.7/15(17.5)kV	12/20(24)kV	18/30(36)kV
Voltage classes	6/10(12)kV	8.7/15(17.5)kV	12/20(24)kV	18/30(36)kV
Partial discharge test at ambient temperature	10kV, <10pC	15kV, <10pC	20kV, <10pC	30kV, <10pC
AC withstand voltage test	27kV 5min	39kV 5min	54kV 5min	81kV 5min
Impulse voltage withstand	±75kV each polarity 10 times	±95kV each polarity 10 times	±125kV each polarity 10 times	±170kV each polarity 10 times

Selection table

Screen cable Connector	Screen Rear cable Connector	Cable Insulation OD(mm)	Cable Conductor Cross-section(mm ²)
6/10(12)kV			
GSFC-12-630A-A	GSRC-12-630A-A	16.5mm-20.9mm	70mm ² -95mm ²
GSFC-12-630A-B	GSRC-12-630A-B	20.3mm-24.3mm	120mm ² -185mm ²
GSFC-12-630A-C	GSRC-12-630A-C	24.7mm-29.5mm	240mm ² -300mm ²
GSFC-12-630A-D	GSRC-12-630A-D	29.5mm-36.3mm	400mm ² -500mm ²
GSFC-12-630A-E	GSRC-12-630A-E	34.5mm-41.5mm	630mm ²
8.7/15(17.5)kV			
GSFC-17.5-630A-A	GSRC-17.5-630A-A	16.5mm-20.9mm	25mm ² -50mm ²
GSFC-17.5-630A-B	GSRC-17.5-630A-B	20.3mm-24.3mm	70mm ² -120mm ²
GSFC-17.5-630A-C	GSRC-17.5-630A-C	24.7mm-29.5mm	150mm ² -185mm ²
GSFC-17.5-630A-D	GSRC-17.5-630A-D	29.5mm-36.3mm	240mm ² -400mm ²
GSFC-17.5-630A-E	GSRC-17.5-630A-E	34.5mm-41.5mm	500mm ² -630mm ²
12/20(24)kV			
GSFC-24-630A-A	GSRC-24-630A-A	16.5mm-20.9mm	35mm ² -50mm ²
GSFC-24-630A-B	GSRC-24-630A-B	20.3mm-24.3mm	70mm ² -95mm ²
GSFC-24-630A-C	GSRC-24-630A-C	24.7mm-29.5mm	120mm ² -185mm ²
GSFC-24-630A-D	GSRC-24-630A-D	29.5mm-36.3mm	240mm ² -300mm ²
GSFC-24-630A-E	GSRC-24-630A-E	34.5mm-41.5mm	400mm ² -500mm ²
18/30(36)kV			
GSFC-36-630A-A	GSRC-36-630A-A	25.2mm-30.2mm	50mm ² -95mm ²
GSFC-36-630A-B	GSRC-36-630A-B	30.2mm-35.9mm	120mm ² -185mm ²
GSFC-36-630A-C	GSRC-36-630A-C	35.9mm-41.2mm	240mm ² -300mm ²
GSFC-36-630A-D	GSRC-36-630A-D	41.2mm-44.5mm	400mm ² -500mm ²

*NOTE:

1. Cable insulation outer diameter is one of the prerequisite for Cable accessories selection.
2. The connector suit for bushings according to EN 50181, connection type C.

Ordering information

Ordering description	Specify details as follows (for example, GSFC 24kV/3C 70mm ² CWS, Alu Cable)
	Screen Type: CWS or CTS
	Armor Type: SWA or STA